

FISHING FOR GNOMES AT WOLLATON PARK

Shortly after dusk on Sunday 23rd September 1979 a group of children who were trespassing in the parkland surrounding Wollaton Hall in Nottingham reported seeing strange lights and what appeared to be gnomes driving floating cars. The encounter is described in Marjorie Johnson's book "Seeing Fairies" which was published by the Fairy Investigation Society in 2014. In Autumn 2021 a friend of mine, Dan Green, who describes himself as a researcher of high strangeness, asked me if I would look into the encounter from a dowsing perspective. Having recently been persuaded by some fellow members of the Ridings Dowsers to engage in what we have now come to call "Nature Dowsing" (Trees, Nature Spirits, Elementals etc.) I readily agreed.

Wollaton Hall is an Elizabethan Mansion built to the same blueprint as Highclere Castle in Berkshire that features as the television Downton Abbey. It stands prominently on a sandstone hill in the centre of a 500-acre deer park. Beneath the Hall is an enormous example of what Dowsers call a Blind Spring. This is a vertical shaft of ascending water that does not rise to the surface of the earth but disperses through horizontal fissures producing dowseable energetic patterns over a wide area.



Figure 1 Wollaton Hall Nottingham

Dowsing suggested that the phenomena of gnomes in floating cars had been witnessed on several occasions in different locations around the park. Consequently, when I visited on my own in October 2021 I just asked to be taken to a place where I could better understand the phenomena. I was led to an open grassy area to the western side of the lake. Here the edge of the lake was rather marsh-like with tall grass growing in the water. It was also at the base of a tree and bracken covered mound. I felt the phenomena that the children had described as gnomes driving floating cars would emerge from holes at the base of tree trunks on the mound at Dusk and rush down the slope onto the grassy area. I walked up onto the mound, leaned against a tree and emptied my mind. It felt like I was in a liminal place and got the Impression of orbs floating around in the autumn sunshine. In my semi-meditative state, I felt they were morphing into something akin to nature spirits as I observed them. Subsequent research showed that I was standing above a geological fault that passes right beneath this mound and such faults are known to produce plasma orbs often called "Earth Lights".

A few days later I returned with two other Dowsers, Tracy Vincent from Birmingham, and another dowsing colleague, who was a former member of the now defunct East Midlands Dowsing Group who used Wollaton Park as a training ground and were consequently very familiar with the area. Our colleague showed us how ten Energy Lines radiated from a sundial behind the Hall. We followed one of these Energy Lines down the hill that the Hall stands on, along an avenue of trees and into the open area that I had been directed to on my previous visit. Between us we established that this Energy Line was pulled from side to side by the Moon and changed its direction of flow just before the Sun set. At the base of the mound, we found that it crossed another Energy Line. However, rather than crossing in a Hamish Miller

style Node where two energy currents narrow and descend into the ground re-emerging a short distance away, these two Energy Lines just seemed to collide in mid-air creating an energetic disturbance in the immediate area.

In 1979 the 23rd of September fell two days after the New Moon. It also just happened to be the date of the Autumn Equinox which had taken place at 4:19am that morning. The Equinox is the time when the Sun crosses the celestial equator and day and night are of almost equal length. At this time there is a unique configuration of energies and science has confirmed that cracks form in the Earth's atmosphere. The encounter is thought to have taken place around 8:15pm. The Sun had set that day at 7:02pm and Civil Dusk was at 7:36pm. The Moon had set shortly afterwards at 8:04pm.

We realised that the encounter in question had likely occurred in a place where the energy was already disturbed, at a poignant time of the year and at a time of the day when the energy in some energy lines switches direction. Add to this the wetland location on the edge of the lake at the base of a tree covered mound above a geological fault line, the sandstone geology that contains tiny pieces of quartz and is permeated with underground voids and caves and plentiful underground water emanating from the nearby blind spring, and we get ideal conditions for the formation of intelligent plasma orbs.

Several researchers, including Gary Biltcliffe, Andrew Collins, Greg Little and Robert Temple, have recently been paying a lot of attention to self-illuminated intelligent plasma which appears to have its own consciousness that interacts with human consciousness morphing into the orbs and other forms often associated with unidentified aerial phenomena, spirit manifestations and paranormal activity. This may have been what I experienced on the mound in bright sunshine during my first visit when unbeknown to me I was standing above a geological fault.

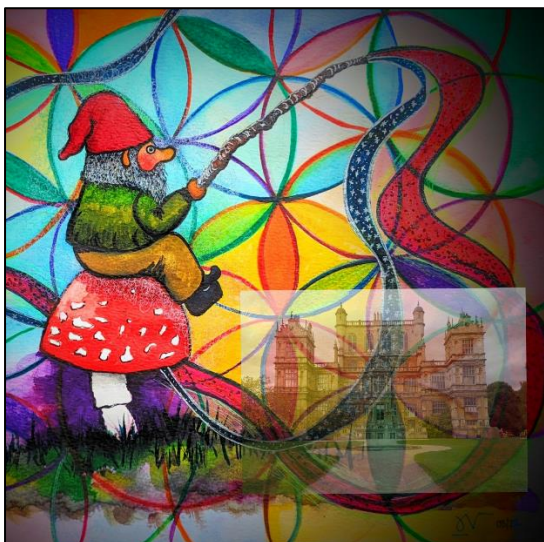


Figure 2 Original Artwork by Tracy Vincent

After our colleague had left, Tracy and I decided to wander up on to the mound and do some Nature Dowsing. We sat underneath a tree amongst the bracken and put ourselves into semi-meditative states. Tracy played some audio of babies laughing in the hope of attracting the Fae. Presently we became aware of being surrounded by little translucent plasma forms that felt to us like nature sprites. We showed some of our photographs to other members of the Ridings Dowzers who had been practicing interacting with energy through photographs. Between us we deduced that there were many orbs floating around in the area which started morph into various forms when we focussed our

attention on them. Rather than us all observing exactly the same thing though, we found that these forms tended to differ depending which Dowser was observing them.

It would seem that these plasma orbs are energised by the consciousness of a human observer allowing them to morph into whatever form the belief system of the individual observer can rationalise. In the case of the 1979 Wollaton Gnomes encounter the observers were 8 to 10-year-old children who had been brought up in the Noddy & Big Ears era and who were familiar with the fairground bumper cars that regularly visited Wollaton Park. In this light it is easy to understand how those children may have described what they encountered as gnomes driving floating cars. This may also explain the other prolific paranormal phenomena that has long been associated with Wollaton Hall and its environs.

In the chapter about the Wollaton Gnomes in “Seeing Fairies” Marjorie Johnson (1911-2011) points out that in her experience nature spirits can create something by visualising it out of universal thought-substance. This may be what early Mediums referred to as “Ectoplasm” which appears to be a plasma-like substance. She also points out that Fairy visions are often coloured by the observer’s personality. From personal experience, Marjorie found the materialised bodies of nature spirits to be self-illuminated, all of which fits in with what we are now coming to understand about plasma, orbs and their relationship to the phenomena often termed “paranormal”.

Simon Young of the Fairy Investigation Society has recently published a book entitled “The Wollaton Gnomes: A Nottingham Fairy Mystery”. It is a collection of 10 essays written about the encounter from various perspectives and includes contributions about the Dowsing from both me (under the pseudonym of Mave Marian the Sherwood Dowser) and Dan Green.

Following our investigation, a fellow Nature Dowser pointed out that according to the elemental beings website (<https://www.elementalbeings.co.uk/gnomes/>) the function of gnomes in the elemental kingdom is to look after the energy centres and leylines, so you never know, perhaps the idea of Gnomes’ fishing rods representing Energy Lines and the toadstools they sit on representing Nodes isn’t as far-fetched as it sounds after all!

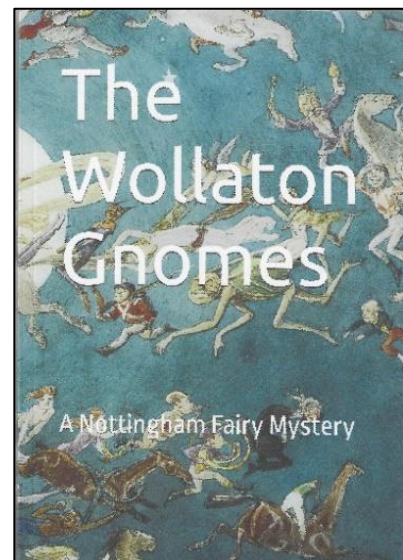


Figure 3 The Wollaton Gnomes Book (2022)

Further Reading:

Collins, Andrew – Lightquest: Your Guide to Seeing and Interacting with UFOs, Mystery Lights, and Plasma Intelligences (2012)

Deveraux, Paul – Earth Lights: Towards and Understanding of the UPO Enigma (1982)

Johnson, Marjorie - Seeing Fairies (2014)

Little, Greg & Collins Andrew - Origins of the Gods (2022)

Temple, Robert - A New Science of Heaven: How the New Science of Plasma Physics is shedding light on Spiritual Experience (2022)

Young, Simon - The Wollaton Gnomes, A Nottingham Fairy Mystery (2022)